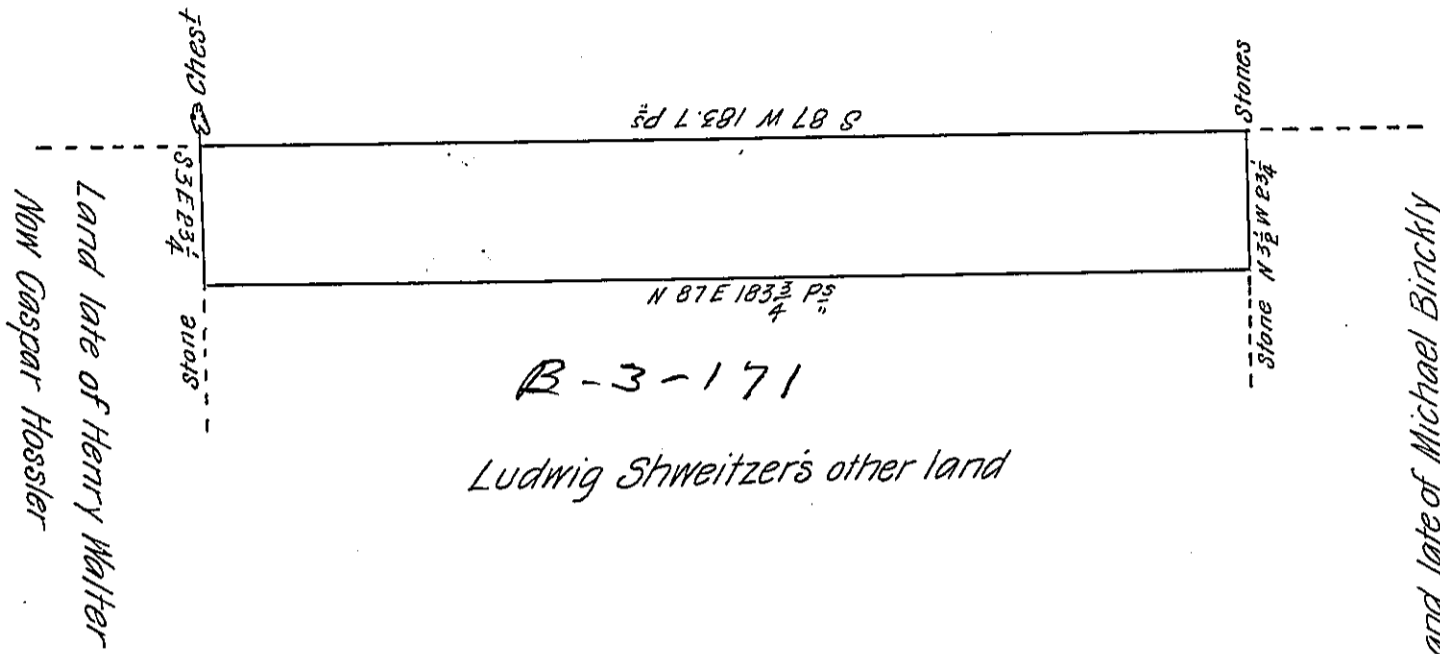


Ludwig Shweitzer's other land



A draught of a Small tract of land Situate in Cocalico township Lancaster County. Containing twenty five acres & one eight of an Acre and the usual allowance of Six Per Cent for Roads &c. Surveyed the 15th day of January A. D. 1789 for Ludwig Shweitzer in right of Bernard Motte. By Virtue of a Warrant dated the 28th day of February A. D. 1754.

P^r Henry Ream D. S^r

To Daniel Brodhead Esq^r
Surveyor General.

IN TESTIMONY that the above is a copy of the original remaining on file in the Department of Internal Affairs of Pennsylvania, made conformably to an Act of Assembly approved the 16th day of February, 1833, I have hereunto set my Hand and caused the Seal of said Department to be affixed at Harrisburg, this second day of March 1906

Isaac P. Ream
Secretary of Internal Affairs.